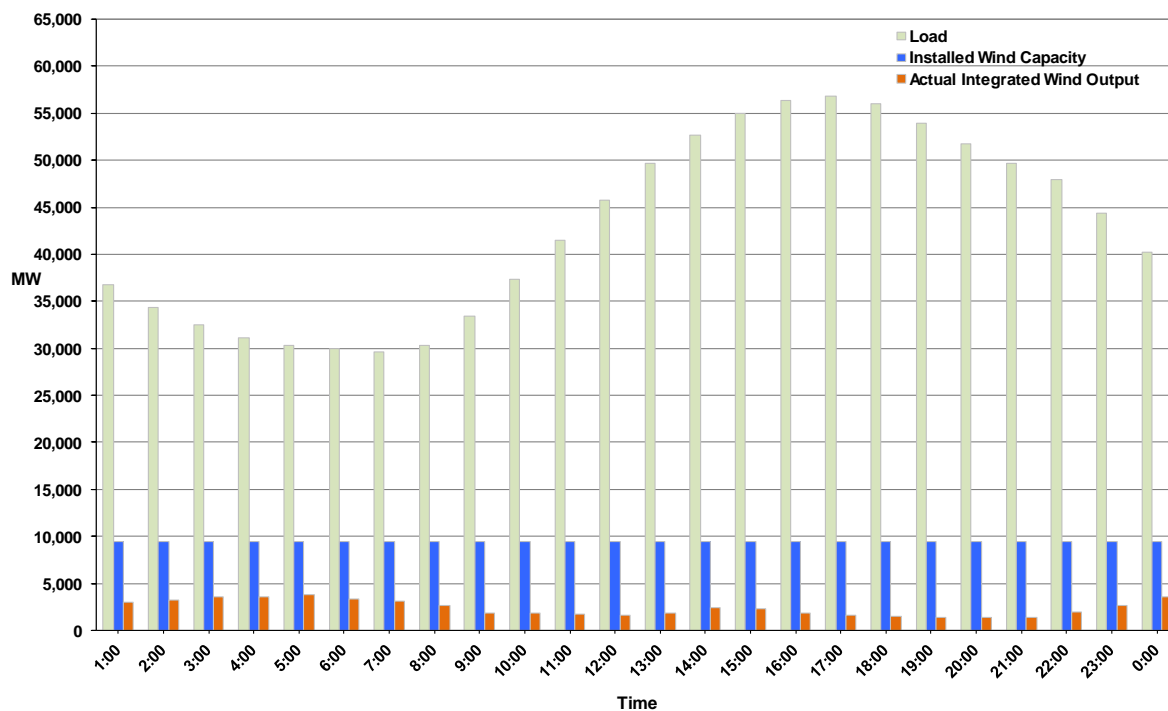




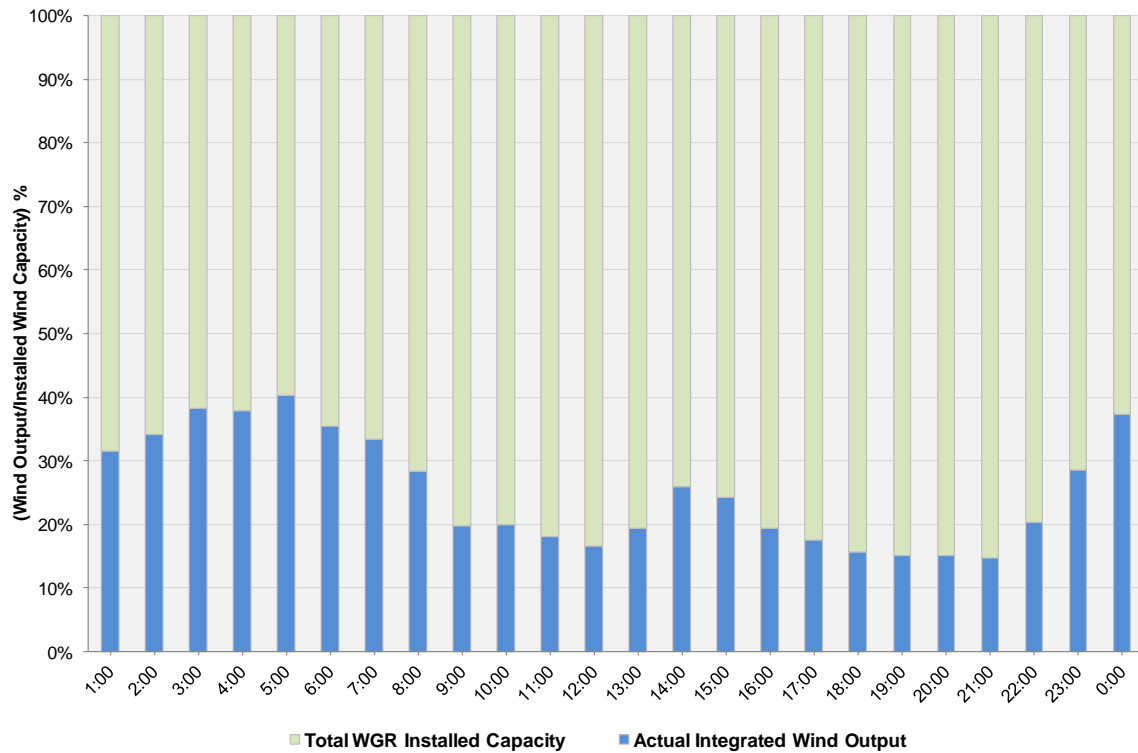
## ERCOT Grid Operations Wind Integration Report: 06/05/11

Peak Load	<b>56,856 MW</b>
Load Peak Hour	<b>17</b>
Wind Record 12/11/10	<b>7,227 MW</b>
Max Wind Value	<b>3,942 MW</b>
Wind Peak Time	<b>23:59:56</b>
Wind Integration %	<b>10.34 %</b>

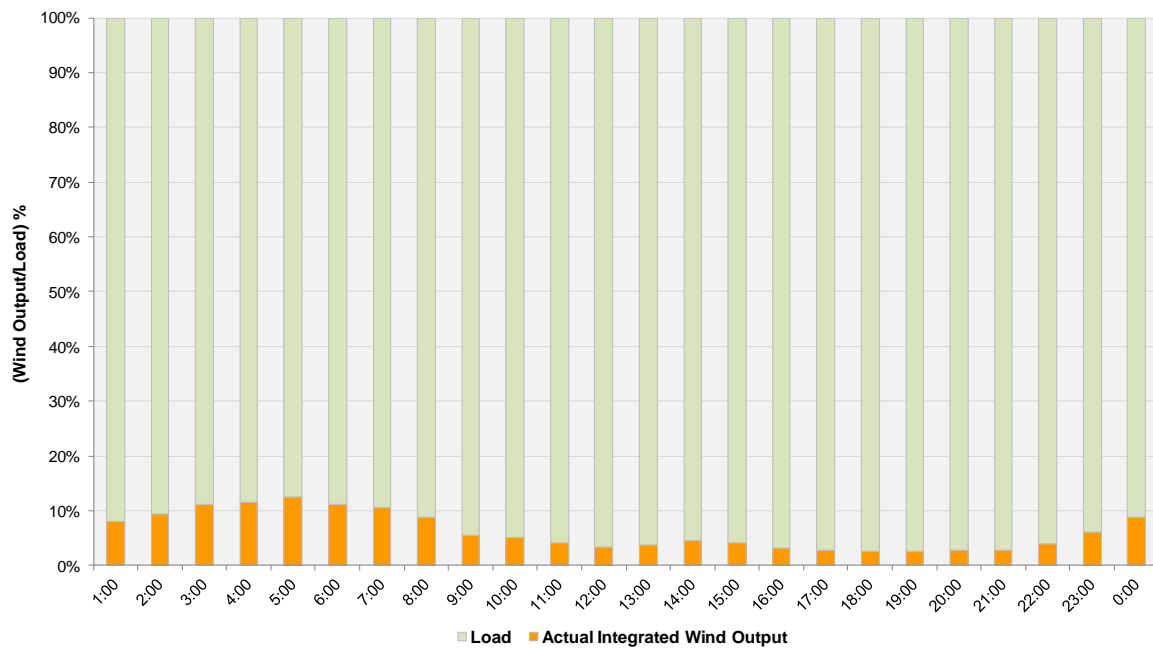
Hourly Average Actual Load vs. Actual Wind Output  
06-05-2011



**Actual Wind Output as a Percentage of the Total Installed Wind Capacity**  
**06-05-2011**



**Actual Wind Output as a Percentage of the ERCOT Load**  
**06-05-2011**



ERCOT Load vs. Actual Wind Output 5/29/2011 - 6/5/2011

